

First published in 2006 by Orpheus Books Ltd.,  
6 Church Green, Witney, Oxfordshire, OX28 4AW

Copyright © 2006 Orpheus Books Ltd.

**Created and produced by** Rachel Coombs,  
Nicholas Harris and Sarah Hartley,  
Orpheus Books Ltd.

**Text** Rachel Coombs and Nicholas Harris

**Consultant** Richard Walker

**Illustrated by** Fiammetta Dogi, Betti Ferrero,  
Sauro Giampaio, Ray Grinaway,  
Inklink Firenze, David Wright

All rights reserved. No part of this book may be  
reproduced, stored in a retrieval system, or transmitted  
in any form or by any means, electronic, mechanical,  
photocopying, recording or otherwise, without the prior  
written permission of the copyright owner.

ISBN 1 901323 XX X

A CIP record for this book is available from the  
British Library.

Printed and bound in Singapore



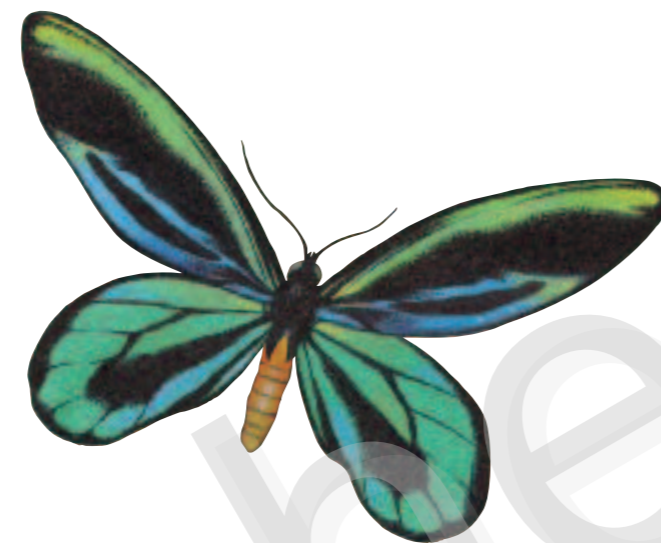
# CONTENTS

## 4 THE WORLD OF MINI-BEASTS

## 6 WHAT IS AN INSECT?

## 8 CAMOUFLAGE AND MARKINGS

## 10 BEETLES



## 12 ANTS, BEES AND WASPS

## 14 HOW HONEYBEES LIVE

## 16 INSIDE AN ANTS' NEST

## 18 TERMITES



## 20 BUTTERFLIES AND MOTHS

## 22 THE LIFE OF A BUTTERFLY

## 24 FLIES AND MOSQUITOES

## 26 INSECT GROUPS

## 28 SPIDERS AND SCORPIONS

## 30 HOW A SPIDER SPINS ITS WEB

## 32 INDEX

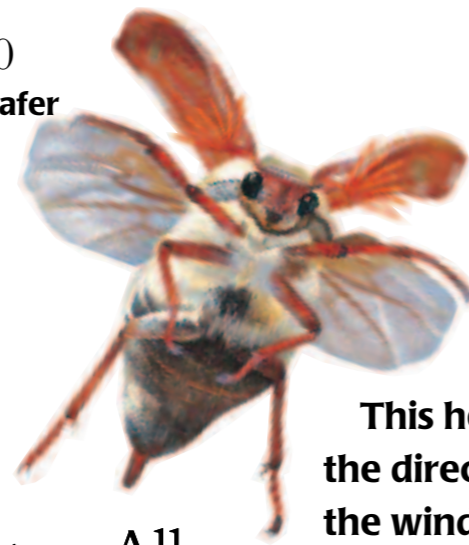
# INTRODUCTION

**B**ESIDES mammals, birds, reptiles and amphibians, there are other kinds of animals that live on land. They are mostly very small. Some live in the soil, while others can fly. Still others live in our homes, and some even live on us! These are the amazing creatures we call mini-beasts—insects, spiders, worms and many others.



# BEETLES

**B**EETLES make up the largest group of insects. There is a huge variety in colours and shapes. All beetles have wings. When they are not in flight, the wings are folded away under hard wing-cases for protection.

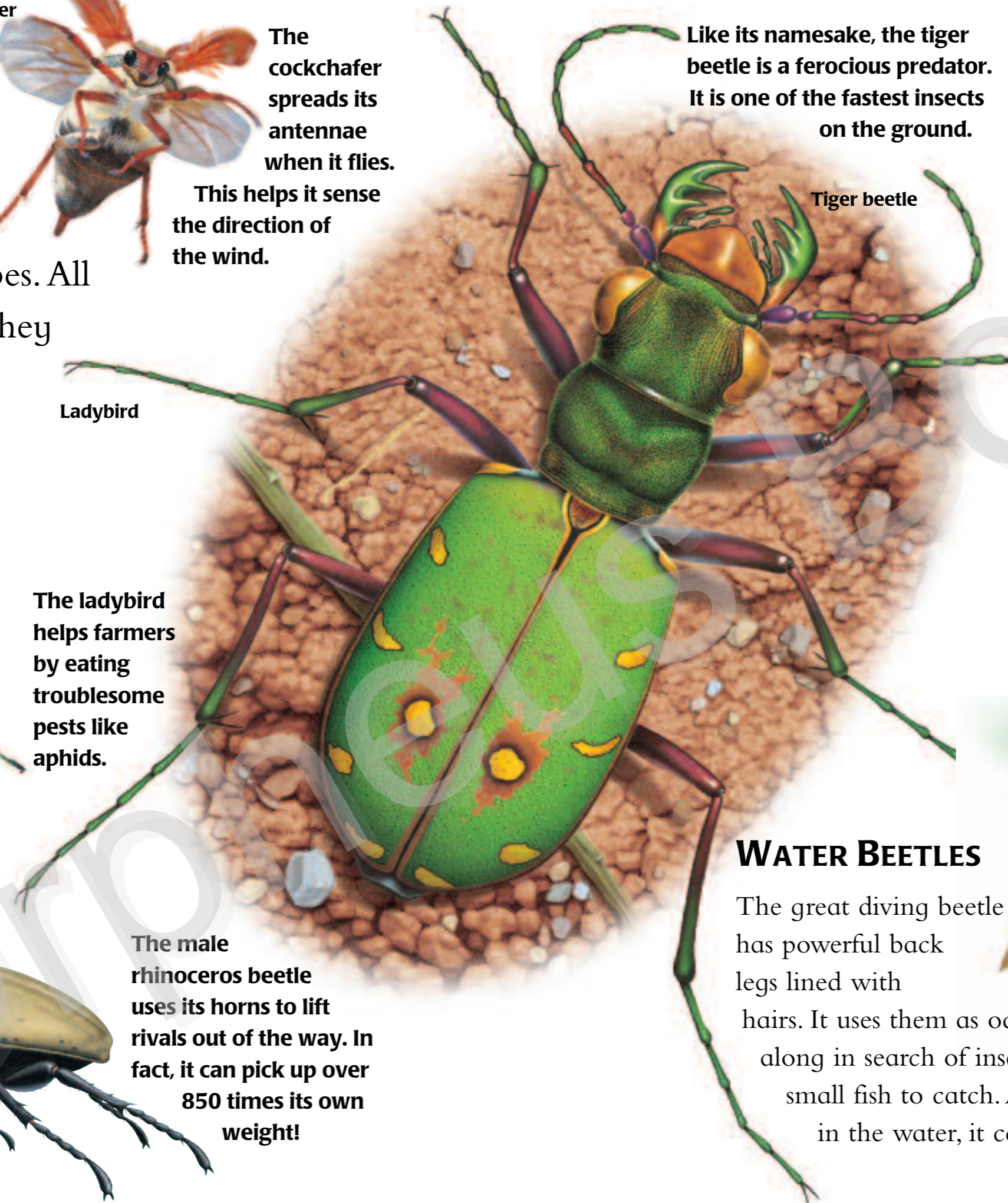


The cockchafer spreads its antennae when it flies.

This helps it sense the direction of the wind.

Ladybird

The ladybird helps farmers by eating troublesome pests like aphids.



Like its namesake, the tiger beetle is a ferocious predator. It is one of the fastest insects on the ground.

Tiger beetle

Dung beetle



## DUNG BEETLES

Dung beetles live in grasslands. The adult beetles use their toothed legs to mould the dung into balls. Then they roll the ball to their under-ground burrows. They lay their eggs in animal dung. Their larvae feed on it when they hatch out.

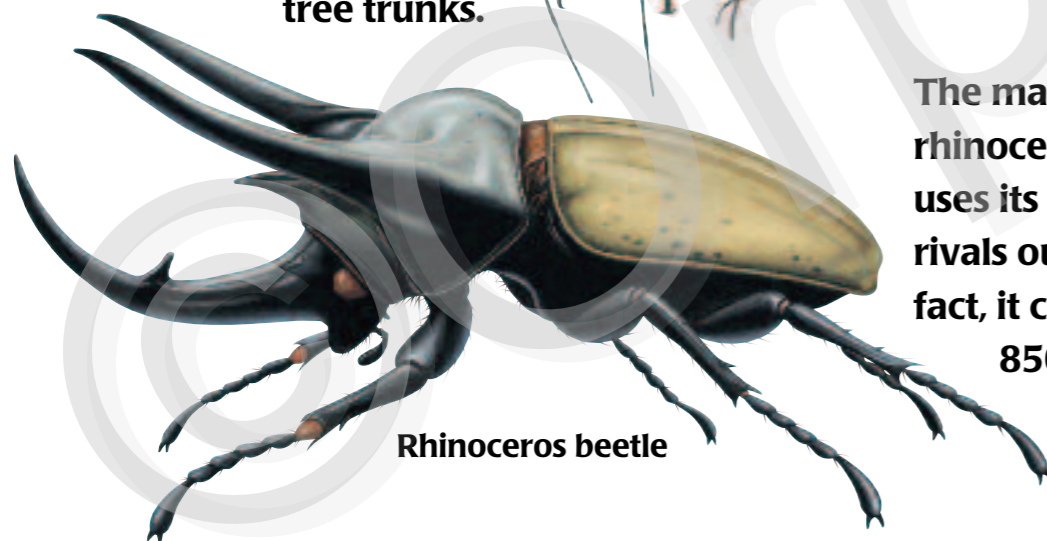
Harlequin longhorn

The harlequin longhorn has very long front legs. These help it to move around tree trunks.



The male rhinoceros beetle uses its horns to lift rivals out of the way. In fact, it can pick up over 850 times its own weight!

Rhinoceros beetle



## WATER BEETLES

The great diving beetle has powerful back legs lined with hairs. It uses them as oars as it swims along in search of insects, tadpoles and even small fish to catch. Although it spends most of its time in the water, it can also fly well.

Great diving beetle

