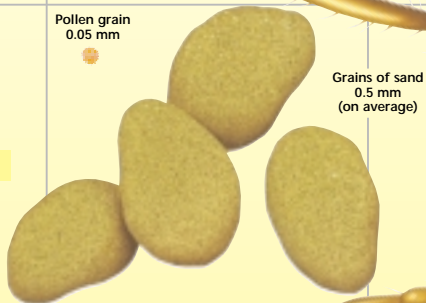


**E**VERYTHING on these pages can be seen with the naked eye, but only a microscope would reveal details. A single snow crystal, for example, shows its six-rayed star shape. A computer microchip, which controls the way a computer operates, is a maze of electronic circuits and components.

Each grid square on this page represents 1 x 1 millimetres

Pollen grain  
0.05 mm

Grains of sand  
0.5 mm  
(on average)

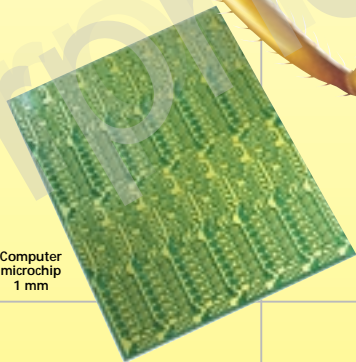


Grains of sand from a beach or desert dunes have smooth surfaces because they have been rubbed together by the sea or by the wind.

A head louse lives by sucking blood from its host—people. It has massive claws which it uses to grip strands of hair so tightly that it is not easily shaken off!

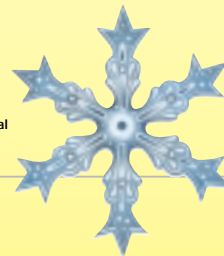
The yellow meadow ant lives in nests of thousands of individuals. They feed on honeydew, the waste from even tinier insects called aphids.

Computer microchip  
1 mm



Yellow meadow ant  
3.5 mm

Snow crystal  
0.75 mm



Human head louse  
1.5 mm

